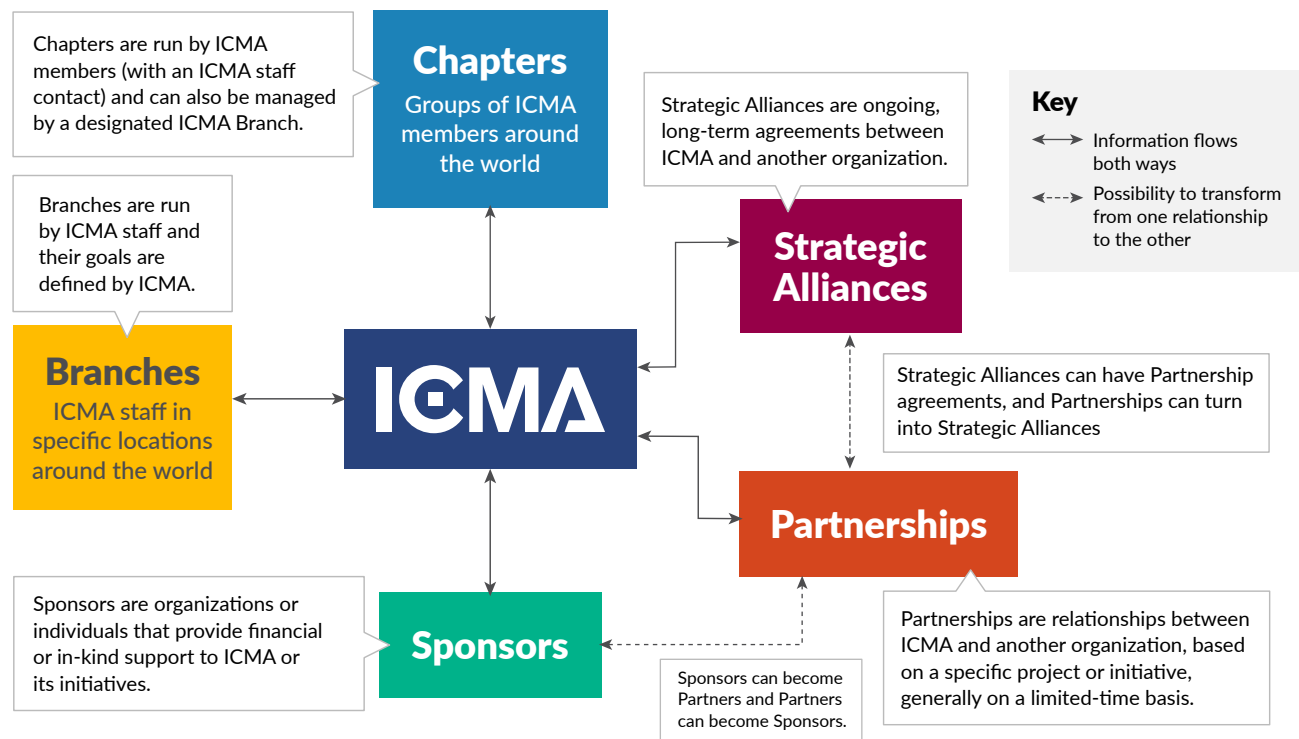


ICMA Relationship Model

Approved by ICMA Executive Board for International Relationships, December 2023



Strategic Alliances

A type of collaborative relationship formed with external organizations to achieve common goals or strategic objectives.

Characteristics

- + Long-term commitment of at least three years.
- + Shared resources, expertise, or technology.
- + Mutual benefits.
- + Mutual investment (not necessarily monetary).

Subcategories

- + **International Strategic Alliances:** With organizations based in different countries.
- + **Domestic Strategic Alliances:** With organizations within the same country as ICMA Headquarters.
- + **Corporate Strategic Alliances:** With for-profit entities.

Partnerships

Formal agreements between two or more organizations to work together on specific projects or initiatives.

Characteristics

- + Defined goals and objectives.
- + Shared responsibilities.
- + Limited duration or project-specific.

Subcategories

- + **International Partnerships:** Collaborations with organizations in different countries.
- + **Domestic Partnerships:** Collaborations with organizations in the same country as ICMA Headquarters.
- + **Corporate Partnerships:** Agreements with for-profit entities.
- + **Governmental Partnerships:** Agreements with government agencies or bodies.

Sponsors

Organizations or individuals providing financial or in-kind support to the main organization or its initiatives.

Characteristics

- + Financial contributions.
- + Support for specific programs or events.
- + May receive recognition or benefits.

Subcategories

- + **Corporate Sponsors:** Businesses providing sponsorship.
- + **Individual Sponsors:** Individuals offering personal support.
- + **Governmental Sponsors:** Government entities providing sponsorship.

Branches

Semi-autonomous staff-driven offices of the parent organization, typically geographically based.

Characteristics

- + Local representation.
- + Consistent branding and mission alignment.
- + May have their own governance structure.

Subcategories

- + **International Branches:** Branches located in different countries.
- + **Domestic Branches:** Branches located within the United States.

Chapters

Semi-autonomous member-driven divisions of a parent organization, typically geographically based.

Characteristics

- + Local representation.
- + Consistent branding and mission alignment.
- + May have their own governance structure.

Subcategories

- + **International Chapters:** Chapters located in different countries.
- + **Domestic Chapters:** Chapters located within the United States.
- + **Student Chapters:** Chapters associated with students. These can be domestic or international.